



集团公司 Group of Companies

中国工厂:东莞凯路精密技术有限公司
KANOU PRECISION (DONGGUAN) CO.,LTD
地址:广东省东莞市长安镇涌头社区宏丰路20号
ADD:NO.20,Hongfeng Rd,Chongtou Community,Changan Town,Dongguan,523846,china
TEL:86-769-8219-8850
电话:173 2215 6162 MS.ZHANG
E-mail:yancey.zhang@kanouprecision.com

日本公司:KANOU PRECISION(JAPAN)CO.,LTD.
〒110-0011 日本東京都台東区三ノ輪1-26-9藤原ビル2階
ADD:2/F,1-26-9,Minowa,Taito-ku,Tokyo,110-0011,Japan
TEL: +81 03-5849-4682
Fax: +81 03-5849-4659
E-mail:yoshihara.kosei@kanouprecision.com

越南公司:KANOU PRECISION VIET NAM CO.,LTD.
ADD:W13306 Vinhomes West Point, Lot HH, Pham Hung Street, Tu Liem Ward, Hanoi, Vietnam.
Office :+84 24 730 0599
E-mail:vn_sales03@kanouprecision.com

新加坡公司:KANOU PRECISION (SINGAPORE) PTE.LTD
ADD:12 Woodlands Square #09-76 Woods Square Tower 1 Singapore 737715
TEL:65-9681-2449
E-Mail:raymond.chew@kanouprecision.com

香港公司:ABLETEC HOLDINGS LIMITED
ADD:RP(43),1/F,Phase 3,Kaiser Estate,No1.1 Hok Yuen St,Hung Hom, Kni HongKong
Tel:+852 59579178
E-mail:musk.lyu@abletec.com.hk



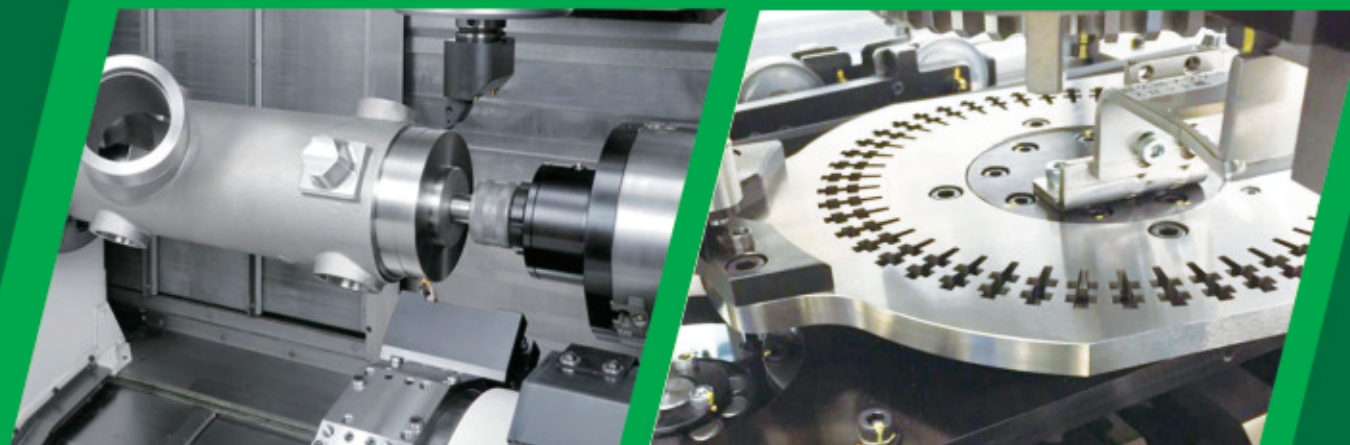
<http://www.kanouprecision.com>
东莞凯路精密技术有限公司

Join KANOU in precision manufacturing innovation.



Your One Stop Precision Partner
您的一站式精密零组件合作伙伴

KANOU Company Profile 公司介绍



凯路精密从2005年创业以来，一直为日本、欧美等世界500强客户提供精密零件和组件；现有员工人数65人，注册资金500万。

公司以日本企业管理制度和精益生产体系，工厂配备日本技术顾问指导，在应对多品种小批量的客户需求方面积累了丰富的管理经验；我们为全球新能源、医疗设备、电子半导体、机器人、商业设备等行业客户提供精密零件及组件一站式生产服务。

Since its establishment in 2005, KANOU Precision has been providing precision parts and components to Fortune 500 clients in Japan, Europe, and America; There are currently 65 employees and a registered capital of 5 million.

The company adopts Japanese enterprise management system and lean production system, and is equipped with Japanese technical consultants to guide the factory. It has accumulated rich management experience in responding to customer demands for multiple varieties and small batches; We provide one-stop production services for precision parts and components to customers in industries such as new energy, medical equipment, electronic semiconductors, robots, and commercial equipment worldwide.

公司发展历程 Company Development History



精密零件加工

Precision parts processing

凯路精密专注于高精度零部件加工与组件制造，拥有CNC、车铣复合等先进设备，加工精度达±0.001mm。主营精密轴类、齿轮、壳体、光学支架等核心组件，服务于航空航天、机器人、商业设备、产业设备、医疗设备与半导体等行业。依托严格的ISO质量管理体系及CAD/CAM智能工艺，我们为客户提供高可靠性、长寿命的定制化精密解决方案，助力高端装备制造。

KANOU Precision focuses on high-precision component processing and component manufacturing, with advanced equipment such as CNC, turning milling composite, etc., with a processing accuracy of ±0.005mm. The main core components include precision shafts, gears, housings, optical brackets, etc., serving industries such as aerospace, robotics, commercial equipment, industrial equipment, medical equipment, and semiconductors. Relying on strict ISO quality management system and CAD/CAM intelligent technology, we provide customers with customized precision solutions with high reliability and long service life, helping high-end equipment manufacturing.



精密零部件组装

Precision parts assembly

凯路精密精密自有组装车间，专注于微米级精密组件系统集成。我们采用自动化装配线与精密检测设备，确保轴承、齿轮、光学模组等核心部件组装精度达±0.01mm以内。严格遵循ISO9001标准，结合防尘恒温环境与智能防错工艺，为医疗设备、半导体装备及航空航天领域提供零缺陷装配解决方案，助力客户提升产品性能与可靠性。

KANOU Precision has its own assembly workshop, focusing on the integration of micron level precision component systems. We use automated assembly lines and precision testing equipment to ensure that the assembly accuracy of core components such as bearings, gears, and optical modules is within ±0.01mm. Strictly following the ISO9001 standard, combined with dust-proof constant temperature environment and intelligent error prevention technology, we provide zero defect assembly solutions for medical equipment, semiconductor equipment, and aerospace fields, helping customers improve product performance and reliability.

DIRECTLY OR INDIRECTLY SERVING CUSTOMERS

直接或间接服务客户



THE ADVANTAGE

我们的优势



多品种小批量

凯路专注于高精度、高复杂度零件的多品种小批量生产，凭借柔性化生产线与敏捷制造体系，快速响应客户需求，确保小批量订单的高效交付。严格的质量管控与丰富的行业经验，助您降低试产成本，加速产品迭代。

KANOU focuses on the production of high-precision, high-complexity parts in small batches and multiple varieties, with flexible production lines and an agile manufacturing, quickly responding to customer needs and ensuring efficient delivery of small batch orders. Strict quality control and rich industry experience help you reduce the cost of trial production and accelerate product iteration.



供应链资源

凯路拥有丰富且稳定的供应链资源，能够满足客户对产品多样化和个性化的需求，并且在降低成本、品质保障上占据优势。快速适应市场变化带来的风险。全球供应链，连接世界，品质保障。

KANOU has abundant and stable supply chain resources, which can meet customers' diverse and personalized needs for products, and have advantages in cost reduction and quality assurance. Quickly adapt to the risks brought by market changes. Global supply chain, connecting the world, quality assurance.



日式管理经验

凯路管理团队都是来自日资企业背景的专业技术和管理人员，我们深耕行业20年具备丰富的经验为全世界提供日本品质的产品。以中国价格，做日本品质。

The KANOU management team consists of professional technical and management talents from Japanese companies. With 20 years of deep industry experience, we provide Japanese quality products to the world. Produce Japanese quality at Chinese prices.



加工能力

我们拥有领先的加工生产设备和组装车间，加工精度可以做到 $\pm 0.001\text{mm}$ 公差，无论是样品、批量生产、组装，凯路可以满足您一切需求。凭借卓越的技术、优质的服务和良好的客户口碑赢得广泛的好评。

We have leading processing and production equipment and assembly workshops, with a processing accuracy of $\pm 0.001\text{mm}$ tolerance. Whether it is sample, batch production, or assembly, KANOU can meet all your needs. With excellent technology, high-quality service, and good customer reputation, it has won widespread praise.



全球多据点供应

凯路在全球多个国家都有自己的办公地及制造基地，可以全方位为客户提供售前售后服务，保证客户利益，为客户提供解决方案。完美的售后服务，为您带来无限商机。

KANOU has its own offices and manufacturing bases in multiple countries around the world, providing customers with comprehensive pre-sales and after-sales services to ensure their interests and provide solutions. Perfect after-sales service brings you unlimited business opportunities.

PRECISION PARTS PROCESSING AND COMPONENTS 精密零件加工及组件

凯路深耕精密零件加工及组装领域，为机器人、医疗设备、电子半导体、商业设备、产业设备、新能源等领域提供专业、高效、高精度、高品质的定制化解决方案。拥有大隈五轴、马扎克、德玛吉、兄弟钻攻机、走心机等国际一流加工设备，结合CNC、注塑、压铸、MIM等先进工艺，确保微米级精度与卓越一致性。从设计优化到批量生产到组装，我们以严谨的品控体系和丰富的行业经验，助力客户提升产品性能与竞争力。

KANOU specializes in precision parts processing and assembly, providing professional, efficient, high-precision, and high-quality customized solutions for fields such as robotics, medical equipment, electronic semiconductors, commercial equipment, industrial equipment, and new energy. We have world-class processing equipment such as Okuma 5-axis, Mazak, Demage, Brother drilling and tapping machines, and walking machines, combined with advanced processes such as CNC, injection molding, die-casting, MIM, etc., to ensure micrometer level accuracy and excellent consistency. From design optimization to mass production and assembly, we use a rigorous quality control system and rich industry experience to help customers improve product performance and competitiveness.



CNC设备
CNC EQUIPMENT



数控车设备
CNC LATHE



走芯机设备
LONGITUDINAL LATHES



注塑成型设备
INJECTION MOLDING MACHINE



无尘清洗房
DUST FREE CLEANING ROOM



烧结炉
SINTERING FURNACE



实验室
LABORATORY



注塑成型设备
INJECTION MOLDING MACHINE



压铸机设备
DIE CASTING MACHINE EQUIPMENT

MEDICAL/MICRO PARTS PROCESSING 医疗/微小零件加工



IMPORTANT PROCESSES 重要工序

01

材料购买
Purchase
materials

钢铁、热处理材料、预硬钢材、钨钢、难切削材料、不锈钢、铝材、黄铜、工程塑料等都可以对应,可提供材质证明。

Steel, heat treated materials, pre hardened steel, tungsten steel, difficult to cut materials, stainless steel, aluminum, brass, engineering Plastic and other materials can be matched, and material certification can be provided.



02

热处理
HeatTreat

正火、烧钝等各种热处理都可对应。真空淬火、浸碳淬火、高频淬火、氮化处理、火焰淬火、回火、退火等。

Various heat treatments such as normalizing and blunting can be applied accordingly. Direct quenching, carbon immersion quenching, high-frequency quenching, nitriding treatment, flame quenching, tempering, annealing



03

精密加工
precision
machining

凯路及合作伙伴拥有领先的生产设备, 机加工精度可以做到领先行业的 $\pm 0.001\text{mm}$ 公差, 无论是样品试做还是批量生产, 都可以提供精确的服务。

KANO and its partners have leading production equipment, and the machining accuracy can achieve industry-leading $\pm 0.001\text{mm}$ tolerance. Whether it is sample trial production or mass production, we can provide accurate services.



04

表面处理
Surface
Treatment

镀硬铬、无电解镍、各种阳极氧化、镀锌、软氮化、铁氟龙、镀铜、电解研磨、犁地处理、DLC、CVD、PVD处理、涂装等等都可对应。

Hard chromium plating, electroless nickel plating, various anodizing, zinc plating, soft nitriding, PTFE, copper plating, electrolytic grinding, plowing treatment, DLC, CVD, PVD treatment, coating, and so on can all correspond.



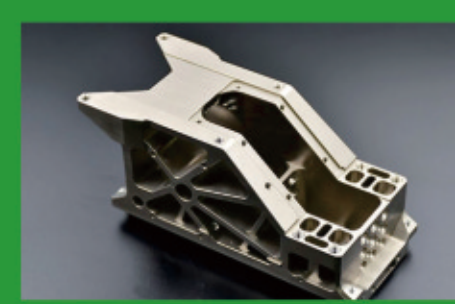
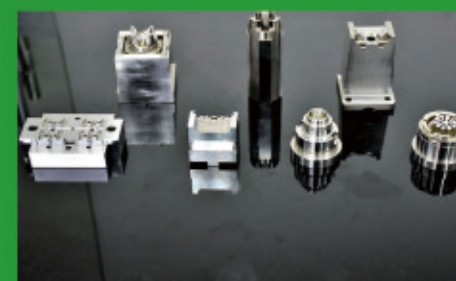
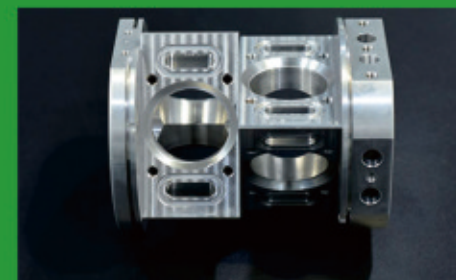
05

组装业务
Assembly
operation

根据客户需求进行组装业务:包括线速组装、轴承组装、亚茹组装、螺栓组装、电子元器件组装等。

Assemble according to customer needs, including line speed assembly, bearing assembly, Yaru assembly, bolt assembly, electronic component assembly, etc.

PRODUCT DISPLAY 产品展示



PRECISION COMPONENT ASSEMBLY 精密零件组装

凯路精密自有组装车间，凭借全自动化精益生产线和微米级精密装配技术，为医疗设备、半导体装备及航空航天领域提供高可靠性系统集成解决方案。我们严格遵循ISO9001与ISO13485国际质量管理体系标准，通过智能装配系统与在线精密检测技术，确保轴承、齿轮、光学模组等核心部件的组装精度稳定控制在 $\pm 0.001\text{mm}$ 以内。依托万级洁净车间、恒温恒湿环境及AI智能防错工艺，我们实现了从原材料到成品全流程可追溯品质管控，为客户提供零缺陷的高精密组件组装服务，助力提升产品性能与长期可靠性。凯路精密以精益化生产和双认证品质保障为核心竞争力，持续为高端装备制造领域创造价值。

KANOU Precision has its own assembly workshop, which provides high reliability system integration solutions for medical equipment, semiconductor equipment, and aerospace fields with fully automated lean production lines and micrometer level precision assembly technology. We strictly follow the ISO9001 and ISO13485 international quality management system standards, and ensure that the assembly accuracy of core components such as bearings, gears, and optical modules is stably controlled within $\pm 0.001\text{mm}$ through intelligent assembly systems and online precision testing technology. Relying on a 10000 level clean workshop, constant temperature and humidity environment, and AI intelligent error prevention technology, we have achieved full traceability quality control from raw materials to finished products, providing customers with zero defect high-precision component assembly services, helping to improve product performance and long-term reliability. Kanou Precision takes lean production and dual certification quality assurance as its core competitiveness, continuously creating value for the high-end equipment manufacturing field.



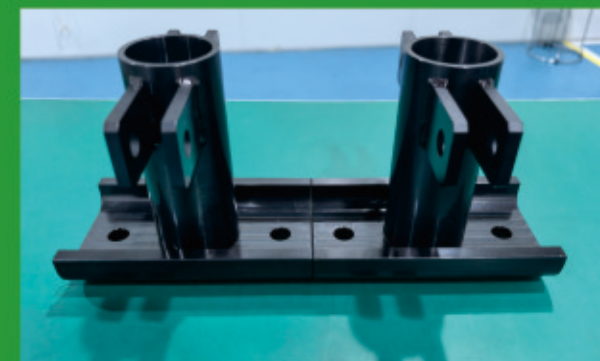
PRECISION COMPONENT ASSEMBLY 精密零件组装



压入组装
Press in assembly



模块组装
Module Assembly



组装组件
Assemble components



线束组装
Friction Tester



无尘车间
clean room

组装服务
Assembly service





3 次元测量仪
CMM Measurement



金属材质分析仪
Material Analyzer



2.5 次元投影仪
2.5-Dimensional
Projector



图像测量仪
One-Button Image
Measurement



轮廓测量仪
Contour Measurement



高度仪
Height Gauge



激光测径仪
Laser caliper

品控:检测设备清单

Quality Control: List of Testing Equipment

序号 Num	设备名称 Equipment name	数量 quantity	产地 origin	序号 Num	设备名称 Equipment name	数量 quantity	产地 origin
1	三次元 Three-d	1	瑞典海克斯康 Hexagon, Sweden	22	圆头千分尺0-25MM Round head micrometer 0-25MM	1	日本三丰 Mitutoyo Japan
2	轮廓度仪 Contour meter	1	日本小坂 Japanese small board	23	内径千分尺0-25MM Inner micrometer 0-25MM	1	日本三丰 Mitutoyo Japan
3	一键投影扫描机 One click projection scanner	1	日本基恩士 KEYENCE	24	外径千分尺0-25MM Outer diameter micrometer 0-25MM	3	日本三丰 Mitutoyo Japan
4	手动影像仪(2次元) Manual Imager (2D)	1	台湾万濠 Taiwan Wanhao	25	外径千分尺25-50MM Outer diameter micrometer 25-50MM	2	日本三丰 Mitutoyo Japan
5	手动影像仪(2次元) Manual Imager (2D)	1	台湾万濠 Taiwan Wanhao	26	外径千分尺50-75MM Outer diameter micrometer 50-75MM	1	日本三丰 Mitutoyo Japan
6	自动影像仪(2.5次元) 2.5D Vision Measuring System	1	台湾万濠 Taiwan Wanhao	27	外径千分尺100-125MM Outer diameter micrometer 100-125MM	1	日本三丰 Mitutoyo Japan
7	手持式XRF分析仪 Handheld XRF analyzer	1	日本奥林巴斯 Olympus Corp	28	外径千分尺125-150MM Outer diameter micrometer 125-150MM	1	日本三丰 Mitutoyo Japan
8	三丰高度仪 Sanfeng altimeter	2	日本三丰 Mitutoyo Japan	29	水平仪 gradienter	1	中国 China
9	尼康高度计 Nikon altimeter	1	日本尼康 Nikon Japan	30	带表机械卡尺 indicator dial micrometer	1	日本 Japan
10	块规(gauge block)	1	日本三丰 Mitutoyo Japan	31	数显卡尺 Digital calipers	3	日本 Japan
11	粗糙度对比板 RCP	1	奥地利INSIZE INSIZE, Austria	32	温湿度计 TH-CALC	1	中国 China
12	洛氏硬度计 HRC	1	中国 China	33	大号消磁机 bulk eraser	1	中国 China
13	偏摆检查仪 ORDI	1	中国 China	34	电子称 electron	1	中国 China
14	推拉力测试计 Push-Pull Gauge	1	中国艾固 China Aigu	35	显微镜 microscope	1	中国 China
15	百分表 dial indicator	2	日本三丰 Mitutoyo Japan	36	电子显微镜 electron microscope	1	中国 China
16	千分表 dial indicator	2	日本三丰 Mitutoyo Japan	37	激光测径仪 Laser caliper	1	日本基恩士 KEYENCE
17	3爪内径千分尺16~20MM 3-jaw internal diameter micrometer 16~20mm	1	日本三丰 Mitutoyo Japan	38	公法线千分尺 Φ0-Φ25 G.T.MIC Φ0-Φ25	1	中国 China
18	3爪内径千分尺20~25MM 3-jaw internal diameter micrometer 20~25MM	1	日本三丰 Mitutoyo Japan	39	公法线千分尺 Φ50-Φ75 G.T.MIC Φ50-Φ75	1	中国 China
19	3爪内径千分尺25~30MM 3-jaw internal diameter micrometer 25~30MM	1	日本三丰 Mitutoyo Japan	40	螺纹环规 Thread Ring Gauge	100+	中国/日本 China/Japan
20	3爪内径千分尺30~40MM 3-jaw internal diameter micrometer 30~40MM	1	日本三丰 Mitutoyo Japan	41	螺纹塞规 Thread Plug Gauge	100+	中国/日本 China/Japan
21	扁卡千分尺0-25MM Flat card micrometer 0-25MM	1	日本 Japan	42	针规 Gauge	100+	中国 China

CORPORATE CULTURE 企业文化

核心价值观：敬天爱人，精益求精

企业使命：用精密智造服务于人类，让未来更加美好

企业愿景：致力成为全球精密智造的核心力量

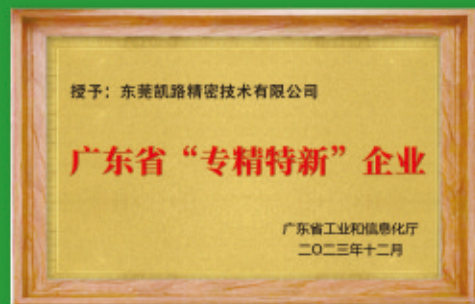
Core values: Respect heaven and love others, strive for excellence

Corporate mission: To serve humanity with precision and intelligent manufacturing, and make the future a better place

Corporate Vision: Committed to becoming the core force of global precision and intelligent manufacturing



OUR CERTIFICATIONS 资质证书



OUR FOUNDER ENVISIONED 创始人说



吕华(Musk LYU)
KANOUGroup董事长兼CEO

我叫吕华(Musk LYU),是KANOUGroup的董事长兼CEO,自2005年成立以来,我们一直以“不可能到可能”为行动指引,通过加强现有业务和致力于新业务的开发,实现了销售额和利润的稳步增长。在这个快速发展的时代,科技正引领我们走向更光明的未来。

作为一家致力于精密制造和智能制造的公司,我们希望通过我们的努力和技术,为人类的未来提供更多的可能性,我们的使命是通过精密制造为人类做出贡献,创造更美好的未来。

我们的产品应用于医疗、航空、汽车、机器人等诸多领域,帮助人们享受更高品质的生活,拥有更舒适的体验。

我们相信,通过我们的不断努力和技术创新,我们可以创造人类更加美好的未来。让我们携起手来,共同为人类的精密智能制造做出贡献!

My name is Musk LYU, and I am the Chairman and CEO of KANOUGroup. Since our establishment in 2005, we have been guided by the principle of impossible to possible and have achieved steady growth in sales and profits by strengthening existing businesses and dedicating ourselves to develop new ones. In this rapidly developing era, technology is leading us towards a brighter future.

As a company dedicated to precision manufacturing and intelligent manufacturing, we hope to provide more possibilities for the future of humanity through our efforts and technology. Our mission is to contribute to humanity through precision manufacturing and create a better future.

Our products are widely applied across diverse industries such as medical, aviation, automobiles, robots etc., helping people enjoy a higher quality of life and have a more comfortable experience. We believe that through our continuous efforts and technological innovation, we can create a better future for humanity.

Let us join hands to contribute to precision and intelligent manufacturing, and advance humanity together.